



---

---

**SEWMAQ®**



**SW-801E**

Manual and parts book

---

---

## **Brief Introduction**

For operation security and machine durability, this skiving machine is designed to be made of quality parts and components. It makes the machine more precise, easy and safe in operation. It is equipped with automatic chip cleaner and knife sharpening clutch. The max. Skiving width is 50mm. Simple parts replacement gives you easy maintenance. It is widely available in skiving all kinds of leather, synthetic leather, rubber, etc.

# Genral Description and Instruction

## I.Application

This machine is a special equipment for makinng of leather goods.It is Widely used for the shaping of slope edge and the even shiving of various Parts for Ieather material and PU material goods such as leather shoes,Gloves,bags,wallet.beIt,macket and suitcase,etc.

## II.Features

- 1.Rational design,compact in structure,easy operation,simple adjustment and good performance.
- 2.Low noise level because of adoption of Low noise precision bearings and making at utmost care.
- 3.With knife sharpener.Driven through clutch level,easy operation and saving on energy.
- 4.With autonatic belt stretcher,safety and reliability in criving.
- 5.With automatic of spare parts.
- 6.Easy replacement cleaning.

## III.Main specifications

- 1.Motor: 370–550W,1400rpm
- 2.Knife size:  $\Phi 18 \times \Phi 114 \times 52$  (mm)
- 3.Knife speed:1270rpm
- 4.Knife axial displacement:30mm
- 5.Feed wheel speed:62,99,132rpm
- 6.Feeding speed:9247,14766,19688mm/min
- 7.Skiving width:10–50mm
- 8.Abrasive wheel size: $\Phi 70 \times \Phi 16 \times 8$  (mm)
- 9.Noise level: < 60dB (A)
- 10.Weight:40kg

## IV.Instllation and adjustment

## 1.Installation

When its being installed,first assemble the stand and work table,then fix the machine on the table by two pairs of hinge,lastly fix the desired motor on the rear side of the table and fix up V.belt.Before being put into operation,it must be trialoperated and it is certain that the turn direction of the Knife is correct(seeing knife rightwards it turns clockwise)and the machine functions normally.

## 2.Adjustment

It is neccessary to make some adjustments according to the skiving requirements.

- 1 ) .When the desired skiving thick of the parts for leather goods varies,please adjust the height of presser foot(1-16)correspondingly.In the case of even skiving and slope skiving,please respectively use Presser foot A and presser foor B;and when a U shape skiving is required,please use presser foot C.Skiving width can be adjusted through the ruler(1-31)
- 2 ) .When it is necessary to change the feeding speed,please change the position of the V.belt on the belt pulley.
- 3 ) .The clearance between the feed wheel and the knife can be adjusted by turning the handles(3-64&3-67).When equal or different clearance along the knife edge is required,please turn the handle(3-67).Turning the handle(3-64)makes the clearance equally decreased or increased.Be sure that feed wheel can't collide with knife.
- 4 ) .When knife is blunt,set the clutch leveler at work position,and then turn the screw(3-36)slowly to grind the knife.
- 5 ) .After the knife is worn,move the knife axis leftwards slightly by turning the knob.The proper distance between the right surface of the presser foot and the knife edge is 0.1-0.5mm.
- 6 ) .Through pushing or pulling the cleaner(2-1)by accessory(4-4),the axial position of cleaner in the knife can be adjusted and the desired cleaning result for different scrap can be got.

## V.Maintenance

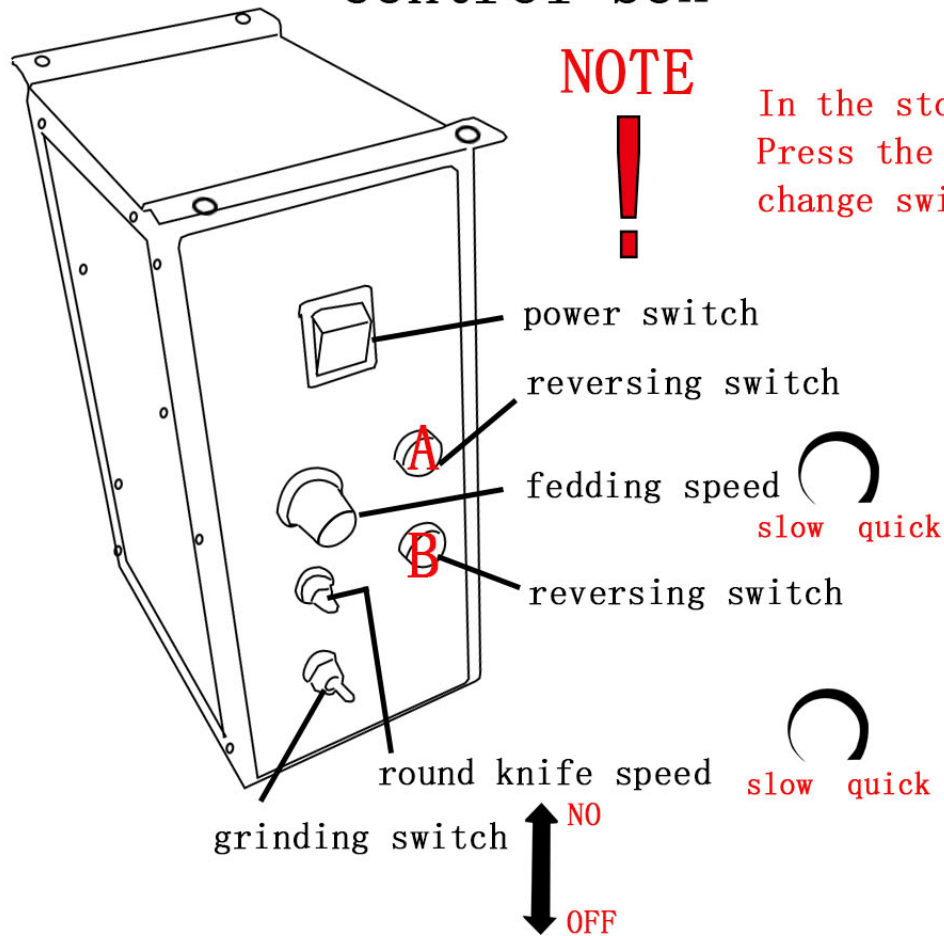
- 1.Before operation,be sure the machine is in a good condition.
- 2.Periodically feed oil on the moving parts.
- 3.Sharpen the knife when it is blunt.
- 4.If there is abnormal noise or bard runing of the machine,it must be stopped and checked at once.If necessary,please have it repairde by a qualified technician.Don't go into operation until the machine has arrived at the good condition.
- 5.Keep the machine clean.

# control box


## NOTE




In the stopped state  
Press the direction  
change switch





1. power switch:Control box power switch

2. feeding speed:Feed wheel adjustment speed 

3. **A** reversing switch:  Adjust the forward and reverse rotation of the feed wheel

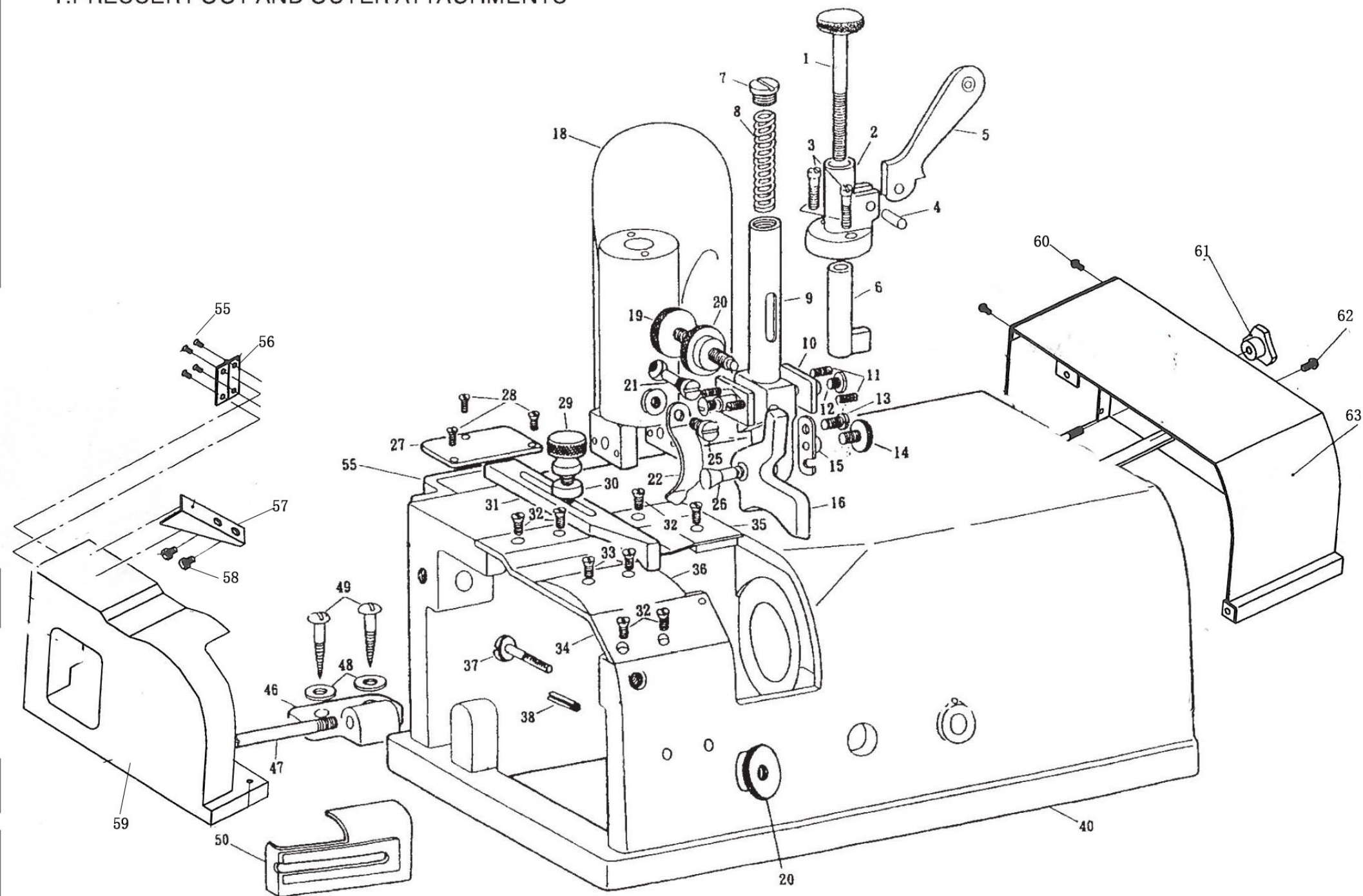
4. round knife speed:Round knife adjustment speed 

5. **B** reversing switch:Adjust the front and back rotation of the circular knife 

6. grinding switch:Grinding knife combination switch 



## 1. PRESSER FOOT AND OUTER ATTACHMENTS

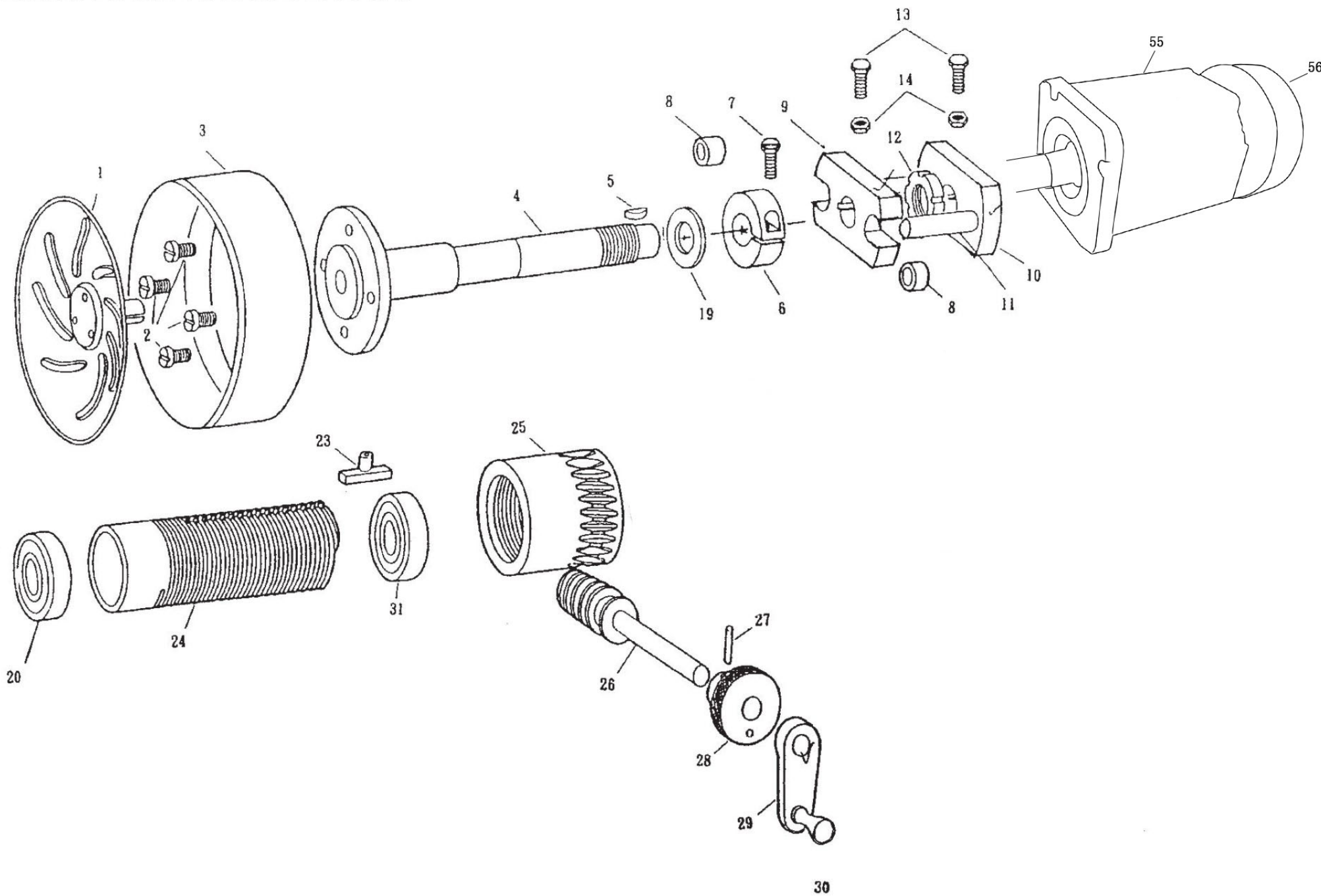


Serial number	Description	Qt. req.
1.1	Presser bar adjusting screw	1
1.2	Presser bar lifter bracket	1
1.3	Presser bar lifter bracket screw	2
1.4	Presser bar lifter pin	1
1.5	Presser bar lifter	1
1.6	Presser bar lifter lever	1
1.7	Presser bar cover screw	1
1.8	Presser bar spring	1
1.9	Presser bar	1
1.10	Presser foot side plates	2
1.11	Presser foot side plates adjusting screws	4
1.12	Presser foot side screws	2
1.13	Presser foot shaft hook metal hinge screw	1
1.14	Presser foot shaft hook metal set screw	1
1.15	Presser foot shaft hook metal	1
1.16	Presser foot 50mm	1
1.17	Oil cup	1
1.18	Arm	1
1.19	Presser foot adjusting screw	1
1.20	Presser foot adjxustabe screw nuts	2
1.21	Presser bar spring pin	1
1.22	Presser foot spring	1
1.23	Inner hexagonal screw	3
1.24	Taper pin	2
1.25	Presser foot spring screw	1
1.26	Presser foot shaft	1

Serial number	Description	Qt. req.
1.27	Worm shamber plate	1
1.28	Screws	3
1.29	Ruler set screw	1
1.30	Ruler screw washer	1
1.31	Ruler	1
1.32	Slide plate screws	6
1.33	Slide plate screws	2
1.34	Slide plate A	1
1.35	Slide plate B	1
1.36	slide plate C	1
1.37	Waster feeder screw	1
1.38	Waster feeder stop pin	1
1.39	Hexcgon sloted screw (Base plate)	2
1.40	Bed	1
1.46	Ruler set screw	2
1.47	Hinges	2
1.48	Hinge pins	4
1.49	Hinge set washers	4
1.50	Hinge set screws	1
1.51	Waste feeder metals(SET)	1
1.53	Bet screw(Transmiasion shalt)	2
1.54	Tape pin	4

Serial number	Description	Qt. req.
1.55	Screw	2
1.56	hinge	2
1.57	hinge	2
1.58	Screw	2
1.59	Feeding frame protective cover	1
1.60	Screw	2
1.61	Belt pulley cover screw	1
1.62	Screw	2
1.63	Belt wheel cover	1

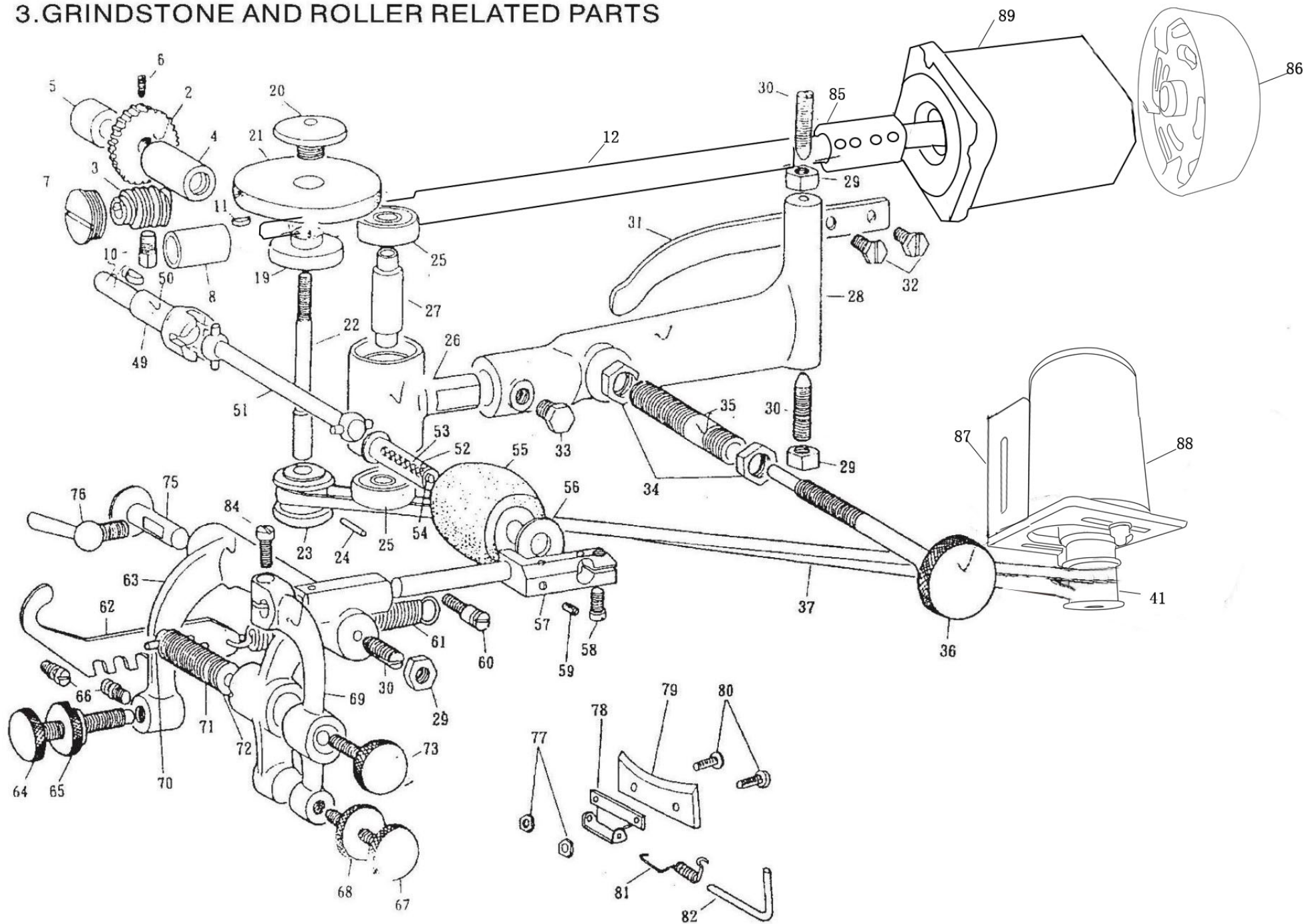
2.KINFE AND BFLATED PARTS





Serial number	Description	Qt. req.
2.1	leather peeled cover	1
2.2	Knife set screws	4
2.3	Knife	1
2.4	Knife shaft	1
2.5	Knife shaft key	1
2.6	Knife shaft nuts	2
2.8	Rubber bushings	2
2.9	Puller shaft flange holder	1
2.10	Pulley shaft flange	1
2.11	Flange shafts	2
2.12	Pulley shaft flange nut	1
2.13	Pulley shaft flange screws(B)	2
2.14	Pulley shaft flange screws(A)	2
2.15	Pulley shaft key(small)	1
2.16	Pulley shaft	1
2.17	Pulley shaft key	1
2.18	Hexagonal nut (A)	1
2.23	Knife shaft lead pipe key	1
2.24	Knife shaft lead pipe	1
2.25	Knife shaft worm wheel	1
2.26	Knife shaft worm	1
2.27	Taper pin	1
2.28	Knife adjusting knob	1
2.29	Knife adjusting handle	1
2.30	Knife adjusting handle Knob	1
2.55	Spindle motor	1
2.56	Hand wheel	1

### 3. GRINDSTONE AND ROLLER RELATED PARTS

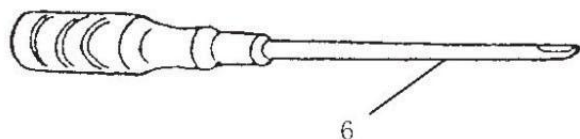
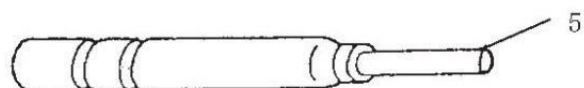
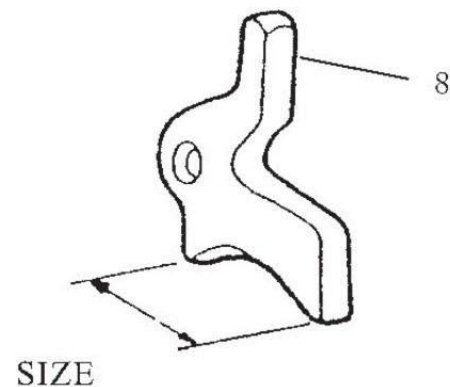
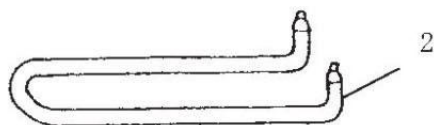


Serial number	Description	Qt.req.
3.1	Worn wheel box	1
3.2	Main shaft worn gear	1
	Wheel	
3.3	Main shaft worn gear	1
3.4	Roller driving shaft	1
	Metal	
3.5	Roller driving shaft	1
	metal(2)	
3.6	Main shaft worn gear	1
	Wheel screw	
3.7	Main shaft worn gear	1
	Chamber cover screw	
3.8	Main shaft front	1
	bushing	
3.9	Main shaft worn gear	1
	chamber oil seal	
3.10	Main shaft worn gear	1
	Chamber screw	
3.11	main shaft key(1)	1
3.12	main shaft	1
3.13	Main shaft key(2)	1
3.19	Grindstone set screw	1
3.20	Grindstone set screw nut	1
3.21	Grindstone	1
3.22	Grindstone shaft	1
3.23	Grindstone shaft pulley	1
3.24	Grindstone shaft pulley taper pin	1
3.25	Grindstone shaft bearing	1
3.26	Grindstone shaft bracket	1
3.27	Grindstone shaft bearing roller	2
3.28	Grindstone shaft bracket arm	1
3.29	Grindstone shaft bracket arm	1
	center screw nuts	1

Serial number	Description	Qt. req.
3.30	Grindstone shaft bracket	3
	arm center screws	
3.31	Grindstone shaft bracket	1
	arm spring	
3.32	Grindstone shaft bracket	2
	arm spring screws	
3.33	Grindstone shaft bracket screw	1
3.34	Grindstone adjusting screw	2
	pipe nuts	
3.35	Grindstone adjusting screw pipe	1
3.36	Grindstone adjusting screw	1
3.37	Grindstone shaft belt	1
3.41	Belt guide pulley	1
3.49	Roller driving shaft	1
3.50	Roller driving shaft key	1
3.51	Roller driving shaft joint	1
3.52	Roller shaft oil wick	1
3.53	Roller shaft	1
3.54	Roller shaft oil seal plug	1
3.55	Roller	1
3.56	Roller washer	1
3.57	Roller bracket	1
3.58	Roller shaft screw	1
3.59	screw	1
3.60	Waste seal metal shaft screw	1
	spring hooks(2)	
3.61	Roller bracket arm spring	1
3.85	Connecting shaft	1
3.86	Hand wheel	1
3.89	Feed motor	1
3.88	Sharpening motor	1
3.87	Sharpening motor bracket	1

Serial number	Description	Qt. req.
3.62	Roller bracket arm	1
	spring hook metal	
3.63	Roller bracket arm	1
3.64	Roller bracket arm	1
	adjusting screw	
3.65	Roller bracket arm adjusting	1
	screw nut	
3.66	Roller bracket arm	2
	springs hooks(1)	
3.67	Roller bracket turning arm	1
	adjusting screw	
3.68	Roller bracket turning arm	1
	adjusting screw nut	
3.69	Roller bracket turning arm	1
3.70	Roller bracket turning arm	1
	spring stopper	
3.71	Roller bracket turning arm spring	1
3.72	Roller bracket turning arm	1
	spring nut	
3.73	Roller bracket turning arm spring	1
	adjusting screw	
3.74	Set screw	3
3.75	Roller bracket arm center pin	1
3.76	Roller bracket arm center	1
	pin screw	
3.77	Waste clear metal leather nuts	2
3.78	Waste clear metal	1
3.79	Waste clear metal leather	1
3.80	Waste clear metal leather screws	2
3.81	Waste clear metal spring	1
3.82	Waste clear metal shaft	1
3.83	Taper pin	1
3.84	Roller shaft screws	

## 4.ACCESSORIES



Serial number	Description	Qt. req.
4.1	Grindstone dresser	1
4.2	Grindstone nut spanner	1
4.4	Knife inter cover remover	1
4.5	Bar type guindstone	1
4.6	Screw driver large	1
4.7	Oiler	
4.16A	Presser foot 50 mm	1
4.16B	presser foot 30 mm	1
4.16X	presser foot	1
4.47	Hinge pins	2
4.46	Hinges	2
4.48	Hinge set screw washers	2
4.49	Hinge set screw	4
2.29	Knife adjusting handle	1
2.30	Adjusting handle	1